

*Thinking of you*  
**Electrolux**

USERS MANUAL

EFT 6510  
EFT 9510





"Let's provide you with a  
superior User Experience  
delivering Ease-of-Mind."

<b>Safety warnings .....</b>	<b>3</b>
For the installer .....	3
For the user .....	3
<b>Installation .....</b>	<b>4</b>
Unpacking .....	4
Location .....	4
Electrical connection .....	4
Installation .....	5
Extraction mode .....	5
Setting of circulation air door.....	5
Ducting recirculation installation .....	6
Charcoal filter .....	6
Operation .....	6
<b>Maintenance and care .....</b>	<b>7</b>
Cleaning the hood .....	7
Metal grease filter .....	7
To replace light globes .....	7
<b>What to do if .....</b>	<b>8</b>
<b>Technical specifications .....</b>	<b>8</b>
<b>Warranty conditions .....</b>	<b>9</b>

Thank you for choosing and using Electrolux home appliances.

Electrolux Group of Sweden is one of the world's largest home appliances companies. With more than 65 million Electrolux products being used by millions of households worldwide each year, it is also the world's largest manufacturer of kitchen electrical appliances. The group has sold more than 55 million kitchen products, which is equivalent to the combined heights of 5 Mount Everest. Besides that, more than 2/3 of the world's star hotels use Electrolux professional kitchen equipment.

Clearly, the excellent achievement of Electrolux over the last 80 years has been widely recognized by 450 million families all over the world. Now, we are pleased to make some of the best products from this renowned brand available to consumers in Southeast Asia. To us, not only is Electrolux one of the most reliable brands in dealing with home appliances, it is also a brand that promises to bring innovative lifestyles to all families through its cutting edge technologies and excellent designs. For not only do they add a touch of elegance to your kitchen, but Electrolux products also makes cooking easier, more enjoyable and something to share with. Enjoy happy cooking now with Electrolux kitchen appliances!

Once again, we would like to extend our heartiest thanks to you for your trust in choosing Electrolux products!

Before installing or using this appliance, please read this instruction book carefully and pay particular attention to the safety warnings in the following page.

Should you have further enquiries regarding this appliance, kindly contact our Customer Care Center for advice. Please keep this instruction book for future reference and pass it on to any future owners of this appliance.

#### For the installer

- When used as an extractor unit, the hood must be fitted with a 120mm diameter hose. Attention: The hose is not supplied and must be purchased separately.
- **When installing the hood, observe the following minimum distances from the cooking top:**

<b>Electric cookers</b>	<b>600mm</b>
<b>Gas cookers</b>	<b>700mm</b>

The hood can be installed above these heights but for optimum performance it should be installed at the distance quoted for the appropriate heat source.
- The national standard on fuel-burning systems specifies a maximum depression of 0.04 mbar in such rooms.
- The air outlet must not be connected to chimney flues or combustion gas ducts. The air outlet must under no circumstances be connected to ventilation ducts for rooms in which fuel-burning appliances are installed.
- The air outlet installation must comply with the regulations laid down by the relevant local authorities.
- When the unit is used in extraction mode, a sufficiently large ventilation hole must be provided, with dimensions that are approximately the same as the outlet hole.
- National and regional building regulations impose a number of restrictions on using hoods and fuel-burning appliances connected to a chimney, such as coal or oil room-heaters and gas fires, in the same room.
- Hoods can only be used safely with appliances connected to a chimney if the room and/or flat (air/environment combination) is ventilated from outside using a suitable ventilation hole approximately 500-600 cm<sup>2</sup> large to avoid the possibility of a depression being created during operation of the hood.
- If you have any doubts, contact the relevant controlling authority or building inspector's office.
- Since the rule for rooms with fuel burning appliances is "outlet hole of the same size as the ventilation hole", a hole of 500-600 cm<sup>2</sup>, which is to say a larger hole, could reduce the performance of the extractor hood.
- If the hood is used in its recirculation mode, it will operate simply and safely in the above conditions without the need for any of the aforementioned measures.
- When the hood is used in its extraction mode, the following rules must be followed to obtain optimal operation:
  - Short and straight outlet hose
  - Keep bends in outlet hose to a minimum
  - Never install the hoses with an acute angle, they must always follow a gentle curve
  - Keep the hose as large as possible (preferably the same diameter as the outlet hole)

- The length should be no more than:
  - 3 metres with one 90° bend
  - 2 metres with two 90° bendsBends of more than 90° will reduce the efficiency of the hood and reduce the airflow

- Failure to observe these basic instructions will drastically reduce the performance and increase the noise levels of the extractor hood.

#### For the user

- The cooker hood is designed to extract unpleasant odours from the kitchen, it will not extract steam.
- Always cover lighted elements to prevent excess heat from damaging the appliance. In the case of oil, gas and coal fired cookers, it is essential to avoid open flames.
- Also, when frying, keep the deep frying pan on the cooker top/cooker under careful control.
- The hot oil in the frying pan might ignite due to overheating.
- The risk of self-ignition increases when the oil being used is dirty.
- It is extremely important to note that overheating can cause a fire.
- **Never carry out any flambé cooking under the hood.**
- **Always disconnect the unit from the power supply before carrying out any work on the hood, including replacing the light bulb**  
(Take the cartridge fuse out of the fuse holder or switch off the automatic circuit breaker)
- **It is very important to clean the hood and replace the filter at the recommended intervals. Failure to do so could cause grease deposits to build up, resulting in a fire hazard.**
- The appliance is not intended for use by young children or infirm persons without supervision.
- Older children must be supervised if using the appliance.
- Young children should be supervised to ensure that they do not play with the appliance.



**WARNING:-**  
**Ensure that the appliance is switched off before replacing the lamp to avoid the possibility of electric shock.**

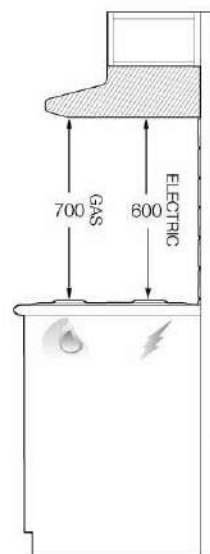
## Unpacking

Check that the cooker hood has no damages. Transportation damages should immediately be reported to the company responsible for the transportation.

Damages, faults and eventually missing details should immediately be reported to the retailer. Take care of the packing materials so that small children cannot play with them.

## Location

The hood is to be mounted on the wall. When installed, the hood must be not less than 60cm above electric burners or 70cm above gas or mixed-fuel burners.



## Electrical connection (not for UK)

### Safety warnings for the electrician

Before connecting the appliance to the power supply, check that the voltage indicated on the rating plate corresponds to the mains power supply available. Appliances fitted with a plug can be connected to any standard power socket within easy access.

Should it be necessary to provide a fixed connection, the hood must only be installed by an electrician authorized by the local electricity board. When installing, an omnipolar disconnector with a distance of at least 3mm between contacts must be provided.

Fixed connection of the appliance must only be carried out by an authorized electrician.

## Electrical connection (for UK only)

### Safety warnings for the electrician

Connect the hood to the mains supply via a double pole switch which has 3mm minimum separation between the contacts.

The switch must be accessible at all times.

The following is valid in the United Kingdom only:

- The wire which is coloured green and yellow must be connected to the terminal which is marked with the letter E or by the earth symbol ( $\perp$ ), or coloured green or green and yellow;
- The wire which is coloured blue must be connected to the terminal which is marked with the letter N or coloured black, -
- The wire which is coloured brown must be connected to the terminal which is marked with the letter L or coloured red.

## 5 installation

### Installation

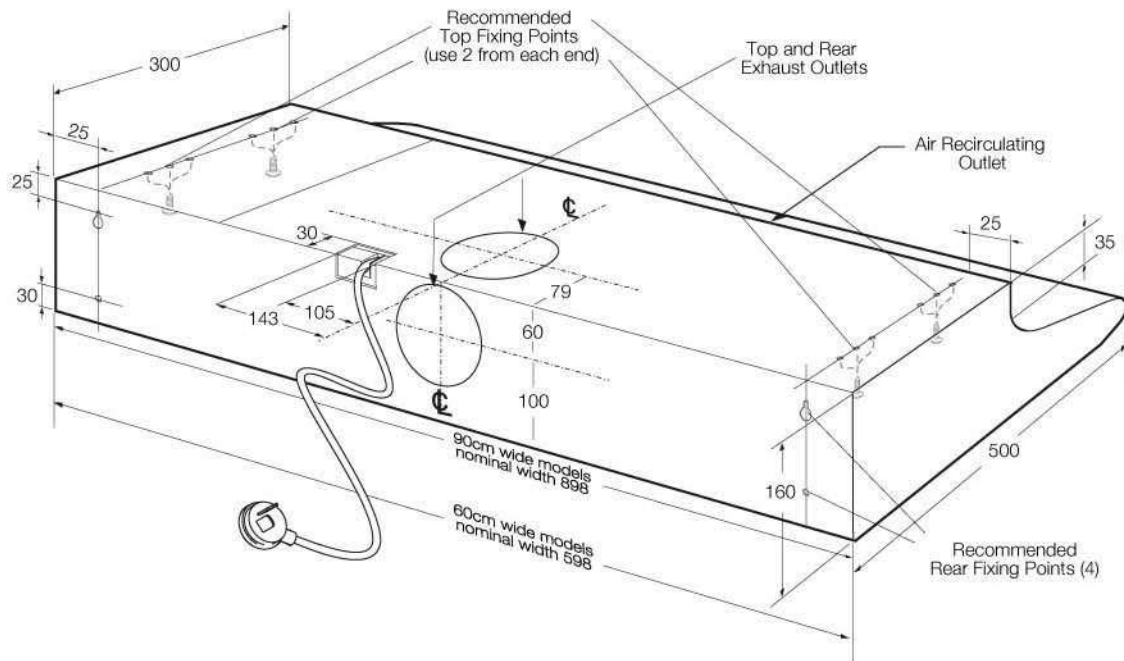
Before installing the cooker hood, remove all protective plastic covering from stainless steel surfaces.

Use at least 4 screws (not provided) and the mounting holes provided to securely mount the cooker hood. Make sure that the cooker hood is level and free from twist.



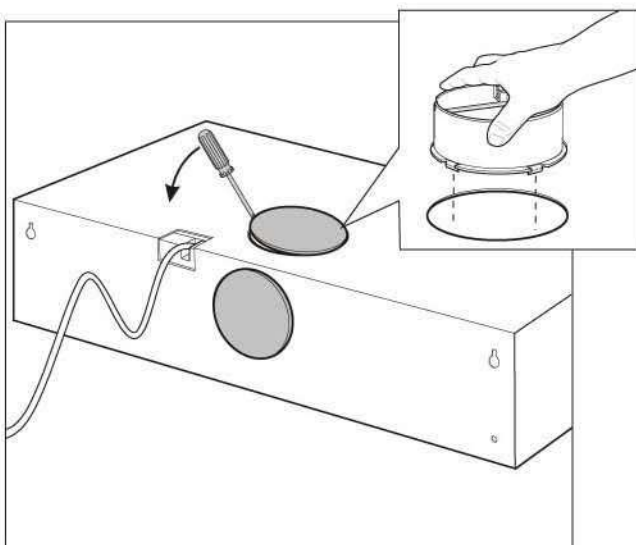
#### IMPORTANT:-

Set circulating modes before installing the hole plugs.

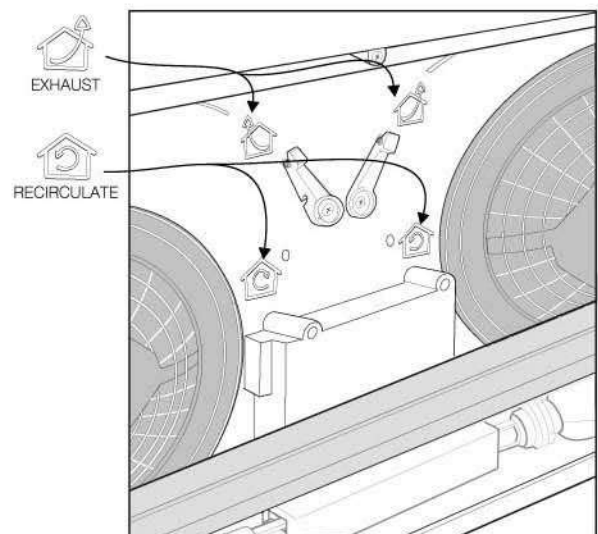


### Extraction mode

Select required exhaust outlet, remove hole plug and snap fit the flue exhaust collar.



### Setting of circulation air doors

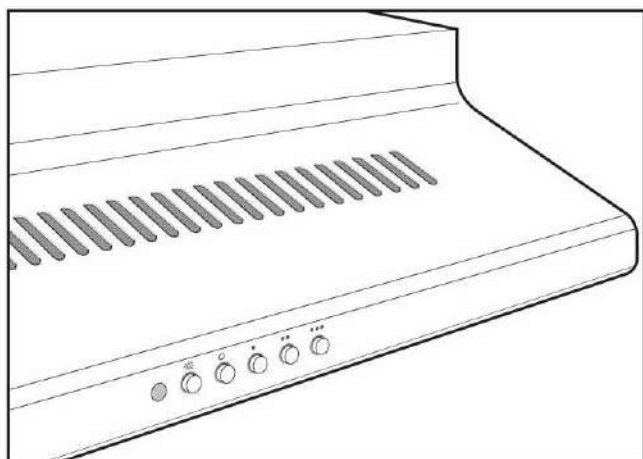


## Charcoal filter

- The charcoal filter should only be used if you want to use the hood in the recirculation function
- This filter cannot be cleaned or reused
- **As a general rule, the activated charcoal filter should be changed once every four months**
- **Fitting - refer below**  
Fit one charcoal filter on the left and one on the right so to cover the plastic grids that protect the fan wheel
- Always specify the hood model code number and serial number when ordering replacement filters. This information is shown on the registration plate located on the inside of the unit
- The charcoal filter can be ordered from your local Service Center

## Operation

Best results are obtained by using low speed for normal conditions and high speed when odours are more concentrated. Turn the hood on a few minutes before you start cooking. It should be left on after cooking for about 15 minutes or until all odours have disappeared.

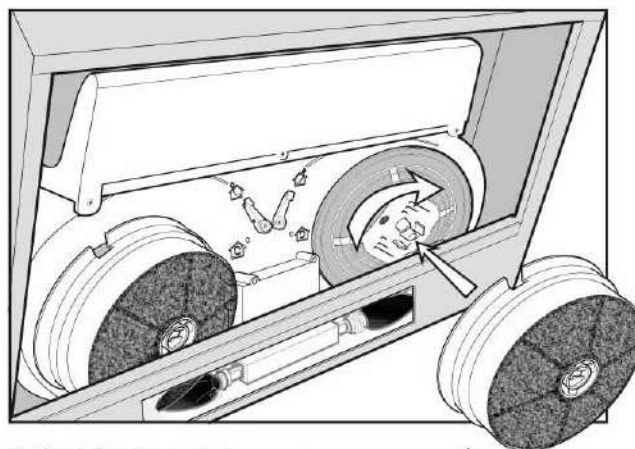


### Press button switch controls

**Light switch:** Depress light button to turn light **ON**. Press light button to turn light **OFF**.

**Extractor fan switch interlocked switching:** Select a fan speed, depress button to turn fan **ON**. Press button **(O)** to turn fan **OFF**.

### All models come with charcoal filter



Recirculating accessory: →  
Carbon filter ARCFD for recirculating mode only.



**IMPORTANT:-**

**The hood must always be disconnected from the electricity supply before beginning any maintenance work.**

**Cleaning the hood**

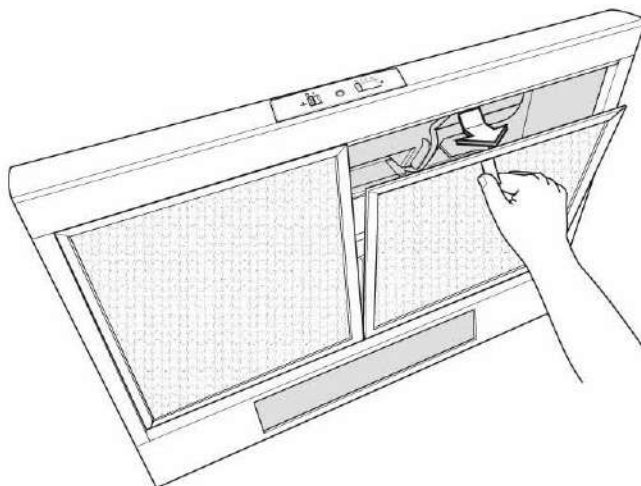
- Clean the outside of the hood using a damp cloth and a solution of water and mild detergent liquid.
- Never use corrosive, abrasive or flammable cleaning products, or products containing bleach.
- Never insert pointed objects in the motor's protective grid.
- Only ever clean the switch panel and filter grill using a damp cloth and mild detergent liquid.
- It is extremely important to clean the unit and change the filters at the recommended intervals. Failure to do so will cause grease deposits to build up that could constitute a fire hazard.

**Metal grease filter**

- The purpose of the grease filters is to absorb grease particles which form during cooking and it must always be used, either in the external extraction or internal re-circulation function.

**Attention: The metal grease filters must be removed and washed, either by hand or in the dishwasher, every four weeks.**

- To remove the metal grease filter



**Hand washing**

Soak grease filters for about one hour in hot water with a grease-loosening cleaner, then rinse off thoroughly with hot water. Repeat the process if necessary. Refit the grease filters when they are dry.

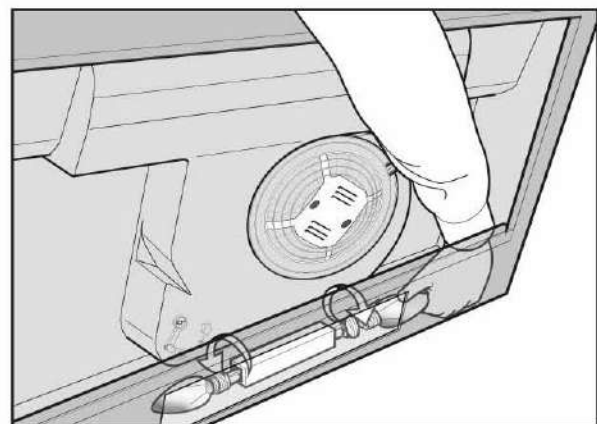
**Dishwasher**

Place grease filters in the dishwasher. Select most powerful washing programme and highest temperature, at least 65°C. Repeat the process. Refit the grease filters when they are dry. When washing the metal grease filter in the dishwasher, a slight discolouration of the filter can occur. This does not have any impact on its performance.

Clean the inner housing using a hand hot solution only (never use caustic detergents, abrasive powders or brushes).

**To replace light globes**

1. Remove filter frame
2. Turn mains switch off before removing lamp. Replace with 40W maximum E14 candle lamp



**WARNING:-**

**Failure to observe the instructions on cleaning the unit and changing the filters will cause a fire hazard. You are therefore strongly recommended to follow these instructions.**

**The manufacturer declines all responsibility for any damage to the motor or any fire damage linked to inappropriate maintenance or failure to observe the above safety recommendations.**

## What to do if

If your appliance fails to work properly, please carry out the following checks:

Symptom	Solution
<b>The cooker hood will not start...</b>	Check that: The hood is connected to the electricity supply. Check that a fan speed has been selected.
<b>The cooker hood is not working...</b>	Check that: The fan speed is set high enough for the task. The grease filters are clean. The kitchen is adequately vented to allow the entry of fresh air. If set up for recirculation, check that the charcoal filter is still effective. If set up for extraction, check that the ducting and outlets are not blocked.
<b>The cooker hood has switched off during operation...</b>	The safety cut-out device has been tripped. Turn off the hob and then wait for the device to reset. If the hood has been installed below the heights indicated in the installation instructions, the motor will cut-out frequently, which will damage the hood.

If after all these checks, the problem persists, contact your local Service Center, quoting the model and serial number.

Please note that it will be necessary to provide proof of purchase for any in-guarantee service calls.

In-guarantee customers should ensure that the above checks have been made as the engineer will make a charge if the fault is not a mechanical or electrical breakdown.

## Technical specifications

Model	EFT 6510/ EFT 9510
<b>Maximum absorbed power</b>	250W
<b>Lighting</b>	2 X 40W
<b>Length of the cable</b>	150
<b>Electrical connection</b>	220 - 240V, 50Hz

The Manufacturer reserves the right to effect any technological improvement or modification without prior notice.

## **Standard warranty conditions**

We, Electrolux, undertake that if within 12 months of the date of the purchase this Electrolux appliance or any part thereof is proved to be defective by reason only of faulty workmanship or materials, we will, at our option repair or replace the same FREE OF CHARGE for labour, materials or carriage on condition that:

The appliance has been correctly installed and used only on the electricity supply stated on the rating plate.

The appliance has been used for normal domestic purposes only, and in accordance with the manufacturer's instructions.

The appliance has not been serviced, maintained, repaired, taken apart or tampered with by any person not authorized by us.

All service work under this guarantee must be undertaken by an Electrolux Service Center. Any appliance or defective part replaced shall become the Company's property.

This warranty is in addition to your statutory and other legal rights.

This warranty does not include maintenance, like cleaning of hood.

***The manufacturer waives all liability for failure to observe the instructions for the appropriate installation, maintenance and use of the extractor hood.***

*If you need any technical help or would like more information about our products, please do not hesitate to contact our Customer Care Centers, listed below:*

### **THAILAND**

Tel: +66 2725 9000  
(24 hours / 7 days a week)  
Add: Electrolux Building, 14th Floor  
1910 New Petchburi Road, Bangkok  
HuayKwang, Bangkok 10310

### **PHILIPPINES**

Nation-wide: +63 2829 0801  
Domestic Toll-Free: 1800-1-888-0801  
(24 hours / 7 days a week)  
Add: 7th Floor, King's Court Building 1  
2129 Chino Roces Avenue, Makati City

### **MALAYSIA**

Tel: 1300-88-11-22  
Fax: +603 5569 3979  
(Mon to Fri: 8.30am-5.30pm, Sat: 8.30am-12.30pm)  
Add: Axis Plaza, Level 2, No. 5, Jalan Penyair U1/44  
Seksyen U1, 40150 Shah Alam, Selangor  
e-mail: customer.care@electrolux.com.my

### **SINGAPORE**

Tel: +65 6513 3688  
Fax: +65 6476 0273  
(Mon to Fri: 9am-5pm, Sat: 9am-12pm)  
Add: No. 2 Leng Kee Road  
#06-08 Thye Hong Center, Singapore 159086  
e-mail: customer-care.sin@electrolux.com.sg

### **VIETNAM**

Tel: 1800-5-888-99  
(Mon to Sat: 8am-12pm/1pm-6pm, Sun: 8am-12pm)  
Add: Sai Gon Trade Center Building, 9th Floor  
Suite 911, 37 Ton Duc Thang Street  
District 1, Ho Chi Minh City

### **INDONESIA**

Tel: +62 21 633 1350 / +62 21 632 8025  
(Mon to Fri: 8.30am-4.30pm, Sat: 8.30am-2.00pm)  
Add: Jalan KH Hasyim Ashari  
No. 17, Jakarta 10130

**www.electrolux.com**

**THAILAND**

**Electrolux Thailand Co., Ltd**

Electrolux Building, 14th Floor  
1910 New Petchburi Road  
Bangkapi, Huay Kwang  
Bangkok 10320 Thailand  
Tel: (+66 2) 725 9100  
Fax: (+66 2) 725 9099

**MALAYSIA**

**Electrolux Home Appliances Sdn. Bhd.**

Axis Plaza Level 2  
No.5 Jalan Penyair U1/44  
Seksyen U1, 40150 Shah Alam  
Selangor Darul Ehsan, Malaysia  
Tel: (+66 3) 5569 1333  
Fax: (+66 3) 5569 3976

**SINGAPORE**

**Electrolux SEA Pte.Ltd.**

No.2 Leng Kee Road  
# 06-08 Thye Hong Center  
Singapore 159086  
Tel: (+65) 9818 8380  
Fax: (+65) 6476 0273

**INDONESIA**

**PT. Electrolux Indonesia**

Wisma Staco 8th Floor  
Jalan Casablanca Kav 8  
Jakarta 12870  
Tel: (+62 21) 831 7140-1  
Fax: (+62 21) 831 7041

**VIETNAM**

**Electrolux Vietnam Ltd.**

Sai Gon Trade Center Building  
Suite 911, 9th Floor  
37 Ton Duc Thang Street, District 1  
Ho Chi Minh City, Vietnam  
Tel: (+84 8) 910 5645  
Fax: (+84 8) 910 5470

**PHILIPPINES**

**Electrolux Philippines Inc.**

7th Floor, King's Court Building 1  
2129 Chino Roces Avenue  
Makati City, Philippines  
Tel: (+63 2) 811 2401  
Fax: (+63-2) 811 2046